

ARGYLE

RESOURCES

CSE: ARGL/OTC: ARLYF/FES: ME0

Critical Resources for Critical Demand

AI + ENERGY + DEFENSE

CORPORATE
PRESENTATION - 2026



Disclaimers



THIS MANAGEMENT PRESENTATION (The "Presentation") was prepared as a summary overview of the current affairs of Argyle Resources Corp. ("Argyle Resources" or the "Company") and was not prepared for the purpose of assisting prospective investors in making a decision to invest in Argyle Resources. Information disclosed in this presentation is current as of May 12, 2026, except as otherwise provided herein and Argyle Resources does not undertake or agree to update this presentation after the date hereof. All information contained in this presentation is derived solely from management of Argyle Resources and otherwise publicly available third-party information that has not been independently verified by the Company. Further, the Company does not make any representation as to the completeness, truth or accuracy of the information contained in this presentation. The Company expressly warns readers not to rely on the information contained herein as advice (legal, financial, tax or otherwise) to current or potential investors. Accordingly, any use of this information is at your risk and without liability to the Company. This presentation does not constitute and should not be construed as either a public or private offer to sell or the solicitation of an offer to purchase securities in the capital stock of Argyle Resources in any jurisdiction in which such offer, solicitation or sale would be unlawful. Each prospective investor should contact his/her or its own legal adviser, independent financial adviser or tax adviser for legal, financial or tax advice regarding investment related decisions respecting the securities of the Company. No person has been authorized to give any information or make any representation other than those contained in this presentation and, if given and/or made, such information or representations must not be relied upon as having been so authorized.

FORWARD-LOOKING STATEMENTS This Presentation contains certain statements, which may constitute "forward-looking information" within the meaning of Canadian securities law requirements (collectively, "Forward-looking statements"). Forward-looking Statements involve statements that are not based on historical information but rather relate to future operations, strategies, financial results or other developments. Forward-looking statements are necessarily based upon estimates and assumptions, which are inherently subject to significant business, economic and competitive uncertainties and contingencies, many of which are beyond Argyle Resources' control and many of which, regarding future business decisions, are subject to change. These uncertainties and contingencies can affect actual results and could cause actual results to differ materially from those expressed in any Forward-looking Statements made by or on Argyle Resources' behalf. Although Argyle Resources has attempted to identify important factors that could cause actual actions, events or results to differ materially from those described in Forward-looking Statements, there may be other factors that cause actions, events or results to differ from those anticipated, estimated or intended. All factors should be considered carefully, and readers should not place undue reliance on Argyle Resources' forward-looking information. Examples of such Forward-looking Statements within this Presentation include statements relating to the future price of minerals, future capital expenditures, success of exploration activities, mining or processing issues, government regulation of mining operations and environmental risks. Generally, forward-looking information can be identified by the use of forward-looking terminology such as "expects," "estimates," "anticipates," or variations of such words and phrases (including negative and grammatical variations) or statements that certain actions, events or results "may," "could," "might" or "occur."

Forward-looking Statements are not guarantees of future performance and involve risks, uncertainties and assumptions, which are difficult to predict. This Presentation reflects Argyle Resources' current views with respect to future events and are necessarily based upon a number of assumptions and estimates that, while considered reasonable by Argyle Resources, are inherently subject to significant business, economic, competitive, political and social uncertainties and contingencies. Many factors, both known and unknown, could cause actual results, performance or achievements to be materially different from the results, performance or achievements that are or may be expressed or implied by such forward-looking information contained in this Presentation and documents incorporated by reference, and we have made assumptions based on or related to many of these factors. Such factors include, without limitation: risks related to Argyle Resources' mineral properties being subject to prior unregistered agreements, transfers or claims and other defects in title; risks related to Argyle Resources' history of losses, which may continue in the future; risks related to increased competition and uncertainty related to additional financing that could adversely affect its ability to attract necessary

capital funding or obtain suitable properties for mineral exploration in the future; risks related to its officers and directors becoming associated with other natural resource companies, which may give rise to conflicts of interest; uncertainty and volatility related to stock market prices and conditions; further equity financing(s), which may substantially dilute the interests of Argyle Resources' shareholders; risks relating to its exploration operations; dependence on general economic, market or business conditions; changes in business strategies; environmental risks and remediation measures; and changes in laws and regulations; fluctuations in spot and forward markets for base and rare metals and certain other commodities (such as natural gas, fuel oil and electricity); the adoption of silicon metals by electric vehicle battery manufacturers; the growth of the global silica and graphite markets; the utilization of existing assets at the Company's mineral properties; the cost of exploration; restrictions on mining in the jurisdictions in which Argyle Resources operates; laws and regulations governing Argyle Resources' operation, exploration and development activities; Argyle Resources' ability to obtain or renew the licenses and permits necessary for the operation and expansion of its existing operations and for the development, construction and commencement of new operations; risks and hazards associated with the business of mineral exploration, development and mining (including environmental hazards, potential unintended releases of contaminants, industrial accidents, unusual or unexpected geological or structural formations, pressures, cave-ins and flooding); inherent risks associated with tailings facilities and heap leach operations, including failure or leakages; the speculative nature of mineral exploration and development; the inability to determine, with certainty, production and cost estimates; inadequate or unreliable infrastructure (such as roads, bridges, power sources and water supplies); environmental regulations and legislation; the effects of climate change, extreme weather events, water scarcity, and seismic events, and the effectiveness of strategies to deal with these issues; risks relating to Argyle Resources' exploration operations; fluctuations in currency markets (such as the US dollar versus the Canadian dollar); the volatility of the metals markets, and its potential to impact our ability to meet its financial obligations; Argyle Resources' ability to recruit and retain qualified personnel; employee relations; disputes as to the validity of mining or exploration titles or claims or rights, which constitute most of its property holdings; Argyle Resources ability to complete and successfully integrate acquisitions; increased competition in the mining industry for properties and equipment; limited supply of materials and supply chain disruptions; relations with and claims by indigenous populations; relations with and claims by local communities and non-governmental organizations; the effectiveness of its internal control over financial reporting; claims and legal proceedings arising in the ordinary course of business activities.

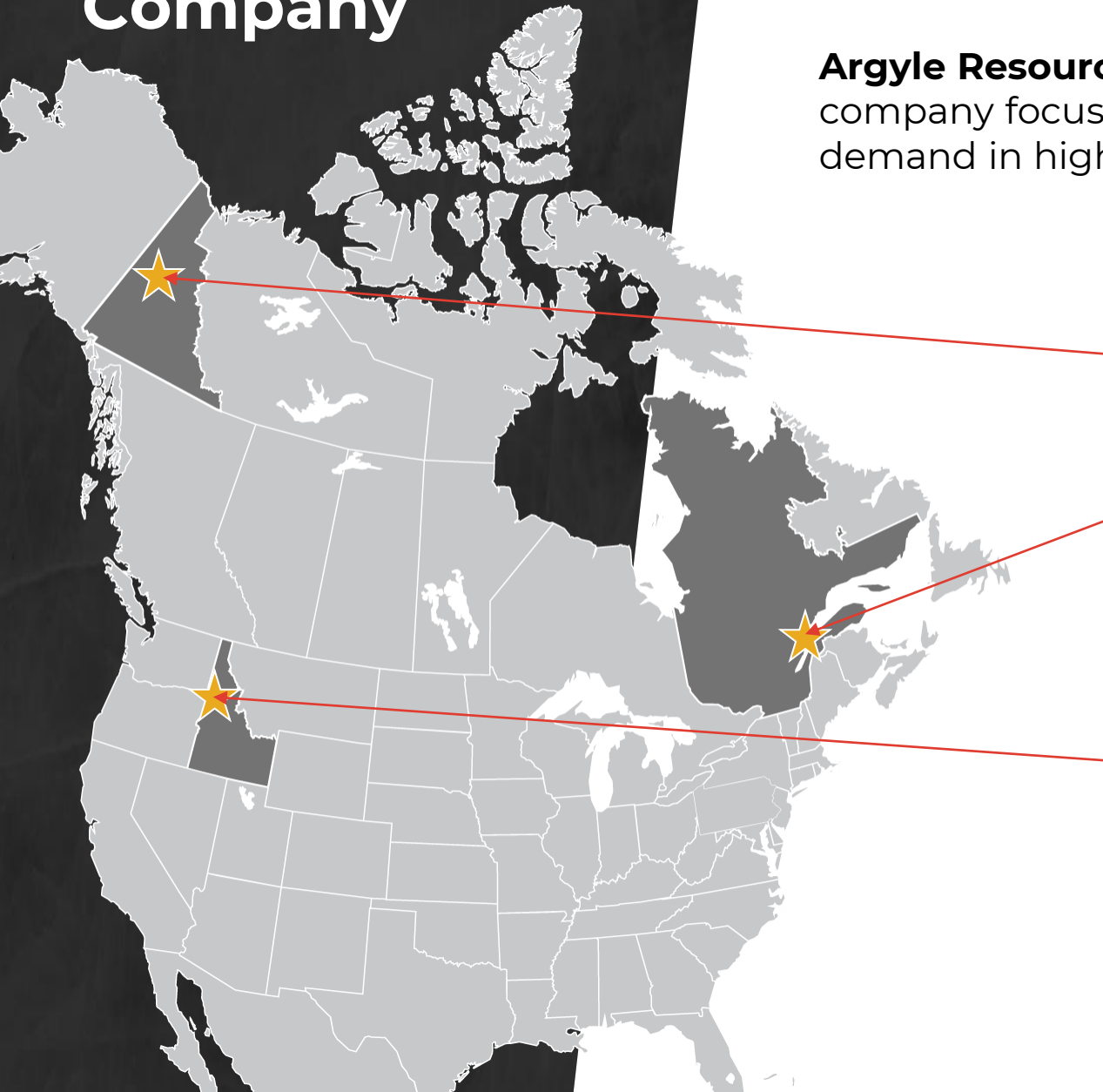
Forward-looking information is made based on management's beliefs, estimates and opinions and are given only as of the date of this Presentation. Argyle Resources undertakes no obligation to update forward-looking information if these beliefs, estimates and opinions or other circumstances should change, except as may be required by applicable law. Current and potential investors should not place undue reliance on forward-looking statements due to the inherent uncertainty therein. All forward-looking information is expressly qualified in its entirety by this cautionary statement.

QUALIFIED PERSON (QP) The technical content of the Presentation has been reviewed and approved by George M. Yordanov, OGC, P.GEO., P.Geo, an advisor to the Company and a Qualified Person under National Instrument 43-101 - *Standards of Disclosure for Mineral Projects*.

About the Company



Argyle Resources (CSE: ARGL) is a junior exploration company focused on silver, and silica for growing demand in high tech, energy, and defense applications.



Silver Project Yukon

- McKay Hill

Silica Projects Quebec

- Pilgrim Island
- Matapedia
- Lac Comporté
- Saint Gabriel

Silica Project Idaho

- Bovill

About the Company

Argyle Resources is strategically positioned at the intersection of AI, Energy, and Defense demand for critical minerals. Our focus is on **high-impact, phased exploration** across our diversified portfolio while maintaining disciplined capital allocation.



CAPITAL ALLOCATION & EXPLORATION STRATEGY

Key Highlights

- **Disciplined & Phased Approach:** McKay Hill acts as the flagship program with clear go/no-go criteria before committing to drilling
- **Flexible Budget:** Programs designed to be scalable based on financing and results
- **Strong Leverage to Macros:** Silver for Defense + AI, Silica for semiconductors/solar
- **Path to Value Creation:** Focus on meaningful news flow throughout 2026 while preserving cash

Use of Proceeds (subject to financing)

- ~65% Exploration & Drilling
- ~15% Permitting, Community & Technical Studies
- ~10% Property Maintenance & Land Holding Costs
- ~10% General & Administrative

All exploration plans and budget allocations are contingent upon successful financing, receipt of permits, and favorable field conditions.

Silver

Silver is the best electrical conductor of all metals and is essential for virtually all electronic devices, especially military sensors, electric vehicles and solar panels.¹



RECORD SILVER DEMAND

Unlike gold, silver has strong industrial demand and supply is tight.

- Hybrid and EV production is expected to triple silver use in the auto sector by 2040.²
- In 2026 the growing solar sector is projected to account for 16% of global silver demand.³
- The AI data center infrastructure boom have driven massive new silver demand.⁴
- A single Tomahawk missile contains 500 oz (15 kg) of silver and the US is scaling up to produce 1,000+ missiles annually.⁵

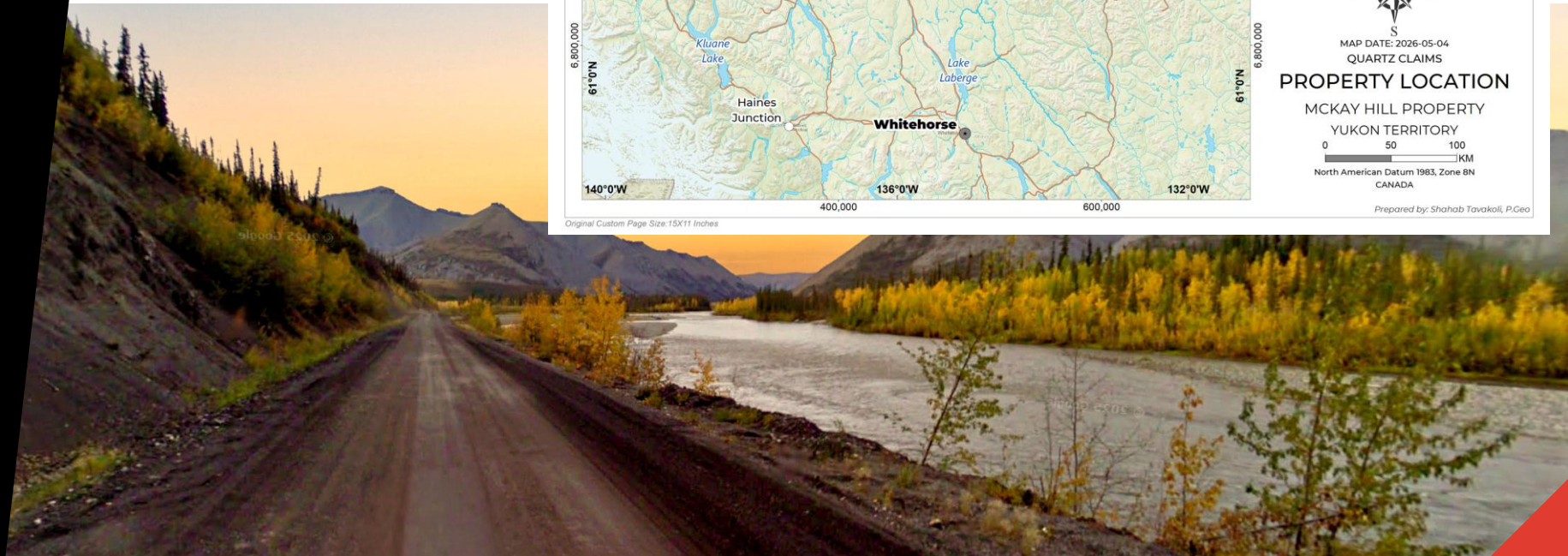
RECORD PRICES: Although gold outperformed most commodities in 2025, it underperformed fellow precious metal silver, which gained 143%.⁶ Tight physical and a volatile geopolitical backdrop are expected to keep prices high.⁶

1. <https://www.usgs.gov/centers/national-minerals-information-center/silver-statistics-and-information>
2. <https://www.globenewswire.com/news-release/2025/12/09/3202581/0/en/Silver-Demand-Forecast-to-Expand-Across-Key-Technology-Sectors.html>
3. <https://www.wsj.com/finance/commodities-futures/the-silver-market-is-messed-up-these-buyers-are-feeling-the-pain-8ab7f954>
4. <https://goldsilver.com/industry-news/article/silver-in-ai-infrastructure-the-hidden-metal-behind-every-ai-model/>
5. <https://goldinvest.de/en/high-demand-for-silver-amid-rapidly-growing-defense-spending/>
6. <https://goldinvest.de/en/silver-to-remain-scarce-in-2026-persistent-deficit-expected-platinum-price-vulnerable>

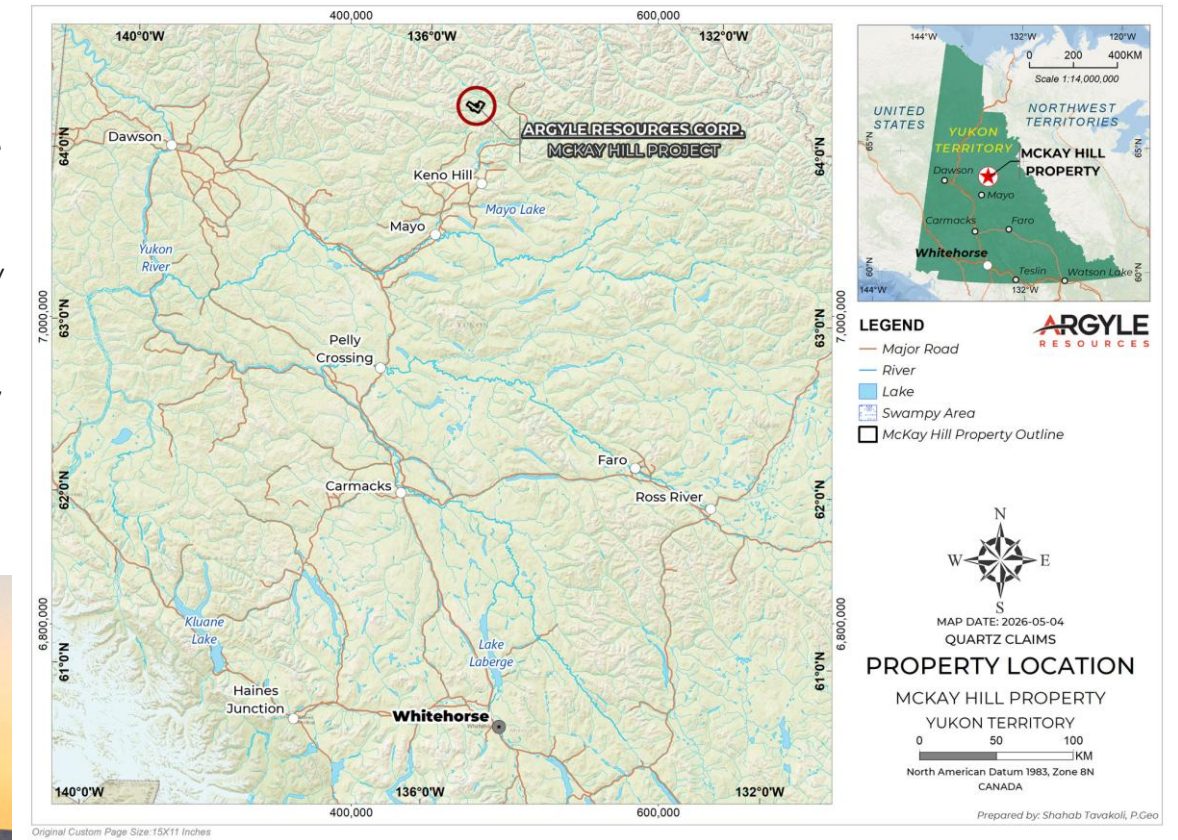
McKay Hill Silver-Lead-Zinc Yukon

The McKay Hill Silver Project is a high-grade silver-polymetallic vein system in the Mayo Mining District of central Yukon, ~50 km north of Keno City and ~350 km north of Whitehorse. The Property comprises 212 contiguous unsurveyed quartz claims covering the southern slopes of McKay, Horseshoe and Sullivan Hills in the southern Wernecke belt of the Ogilvie Mountains.

The Property has a documented exploration history dating to the early 1900s, including small-scale historical mining. Six modern exploration seasons were completed by Metallic Minerals Corp. and its predecessor Monster Mining Corp. between 2007 and 2020, culminating in the first drilling on the Property in over 90 years.



Past production figures cited from historical records are not based on a current Mineral Resource estimate and should not be relied upon as such.



McKay Hill Silver–Lead–Zinc Yukon

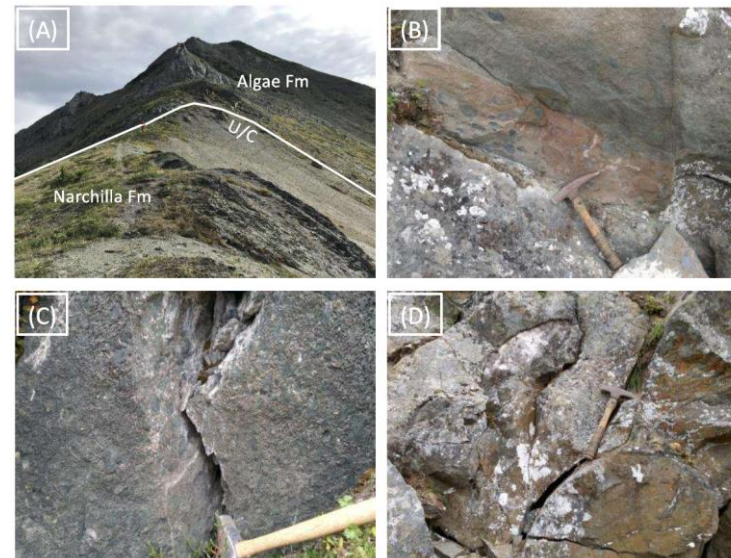


Geology & Mineralization

The Property is underlain by mafic alkalic volcanics of the Dempster volcanics (Marmot Group), with a mapped thrust contact against the underlying Narchilla Formation. Mineralization occurs as NNE-striking, decimetre- to metre-scale quartz–galena ± copper-oxide ± sphalerite ± sulfosalt veins, with banded, vuggy and replacement textures. In high-porosity host lithologies — conglomerates, mafic volcanoclastics, and grit — mineralization is preserved as matrix-replacement style, interpreted as the interaction of mineralizing fluids with carbonate-bearing host rocks.

The deposit model is intermediate-sulphidation vein-type with stratiform carbonate-replacement — a different style from the better-known Keno Hill Quartzite-hosted veins to the south, but in the same regional silver belt.

To date, 41 mineralized veins have been mapped on the Property across eight known mineralized zones: Central, West McKay, Falls, Bella, Red, Independence Hill, Independence North, and White Hill. The Central Zone is a historical past producer.



- A. Looking at Narchilla Formation slate unconformable contact with Algae Formation limestone.
- B. Sharp contact between pyroxene-plagioclase-phyric basalt above conglomerate.
- C. Looking at textbook hyaloclastite (quenched basalt) subaqueous flows.
- D. Pillowed, locally-vesicular, basalts with intrapillow carbonate (limestone) E0477850/N7138477).

McKay Hill Silver-Lead-Zinc Yukon

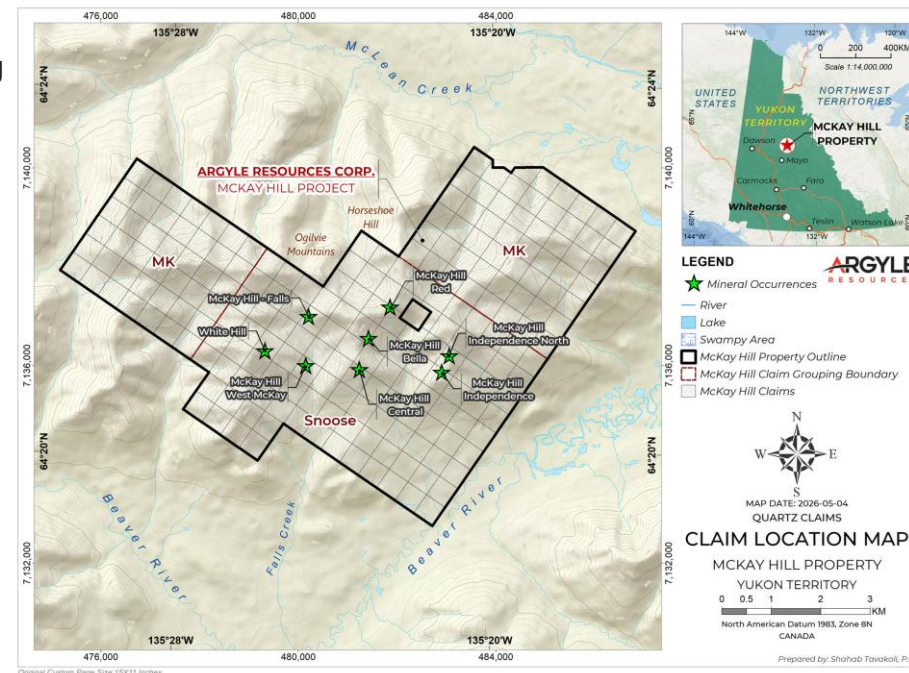


2020 Drill Highlights

In July 2020, Metallic Minerals Corp. (the prior operator) completed **five reverse-circulation drillholes** on the Central Zone — the first drilling on the Property in over 90 years. **Mineralization was intersected in all five holes.** Selected results from the program:

| Hole | Interval | Length | Grade |
|-----------|-----------------|--------|---|
| MH20-04 | 41.91 – 57.91 m | 16.0 m | 180.2 g/t Ag-Eq (5.15 g/t Ag, 0.57% Pb, 3.12% Zn) |
| including | 48.77 – 52.58 m | 3.8 m | 758.6 g/t Ag-Eq (7.67 g/t Ag, 1.1% Pb, 14.58% Zn) |
| MH20-05 | 80.01 – 80.77 m | 0.76 m | 22 g/t Ag, 5.26% Pb, 1.0% Zn |

A new vein, the **Drury vein**, was discovered during the 2020 prospecting program. A grab sample returned **21% Pb, 9.4% Zn, >100 g/t Ag and >1% Cu.**



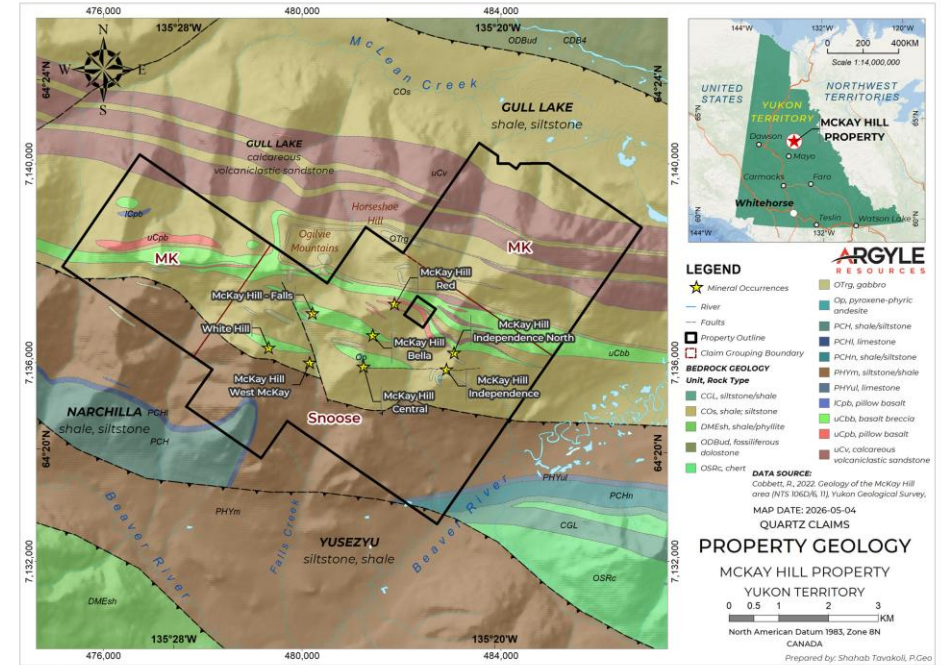
Forward-looking statements regarding the planned 2026 program are subject to permits, contractor availability, weather, and the results of earlier-phase work. Any change to the planned scope will be disclosed in accordance with the Company's continuous-disclosure obligations.

McKay Hill Silver-Lead-Zinc Yukon

2026 Exploration Plan

Argyle Resources Corp. is advancing McKay Hill with a phased 2026 program designed to validate and expand the mineralization identified by previous operators:

- Phase 1 (surface):** Property-scale geological mapping, infill and extension soil sampling (617 stations across three sub-phases), mechanical trenching with channel sampling on the highest-priority targets, ground geophysics (Mag/VLF and selective IP).
- Phase 2 (drilling):** Up to 1,500 m of NQ diamond drilling targeting the No. 6 corridor and the Drury vein, contingent on a Phase 1 go/no-go gate (e.g., positive trench results of X g/t Ag-Eq, specific geophysical anomalies, etc.).
- Permitting:** Class 3 Quartz Mining Land Use Approval and YESAB Designated Office screening.
- Community engagement:** ongoing consultation with the First Nation of Na-Cho Nyäk Dun, in whose traditional territory the Property is situated.



Historical exploration results referenced here in were generated by previous owner consultant TruePoint Exploration during the 2007–2020 work programs and are presented for historical context only. Argyle's Qualified Person has reviewed the historical data on the basis of the original assessment report and assay certificates and considers the data reliable for indicating exploration potential, but cautions that historical results have not been independently verified to the standard of a current Mineral Resource estimate. Historical results are not necessarily indicative of future results.

Silica

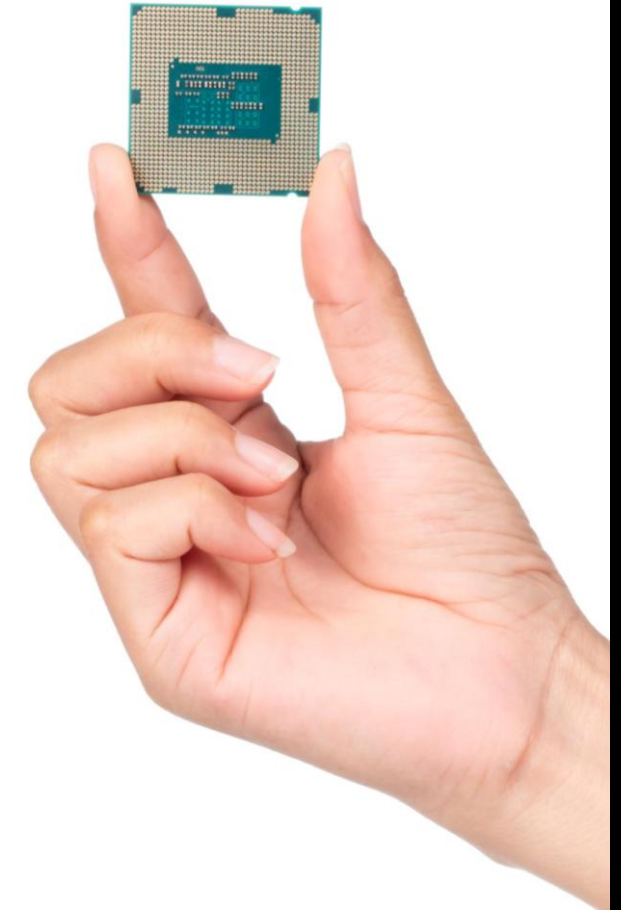
The World's
Second-Most
Consumed
Resource After
Water¹.



GROWING SILICA DEMAND

High-purity silica demand is surging, driven by AI, 5G, and renewable energy.

- Silica is an oxide of silicon (silicon dioxide) which is primarily found in quartzite. **High Purity Quartzite** (HPQ) is ideal for industrial processing.²
- Silicon, derived from high quality quartz, is the most common material for **semiconductors** due to its high stability as an atom, and that it doesn't break easily under high temperatures.³
- The US, EU and Canada have all listed silicon as a **Critical Mineral** due to its vital role in high-tech, energy, and defense.^{4,5,6}



[1] <https://www.mdpi.com/2075-163X/13/12/1505>

[2] <https://en.wikipedia.org/wiki/Quartz>

[3] <https://www.acumenresearchandconsulting.com/silicon-market>

[4] <https://www.usgs.gov/news/science-snippet/interior-department-releases-final-2025-list-critical-minerals>

[5] <https://www.consilium.europa.eu/en/infographics/critical-raw-materials/>

[6] <https://www.canada.ca/en/campaign/critical-minerals-in-canada/>

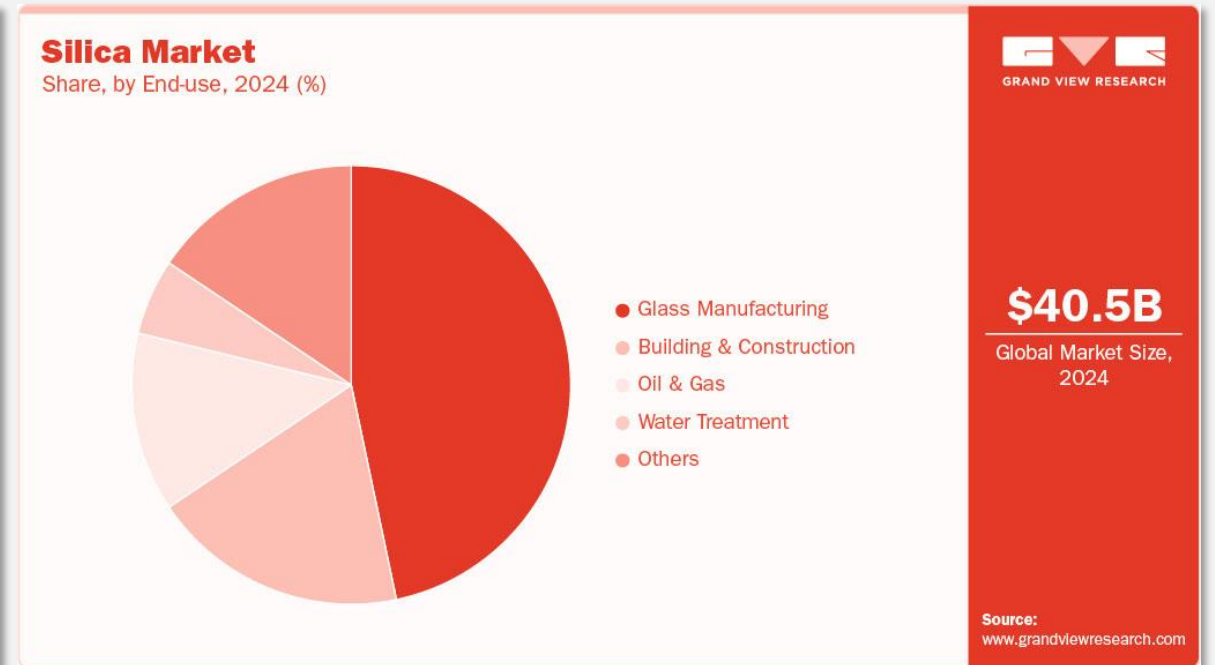
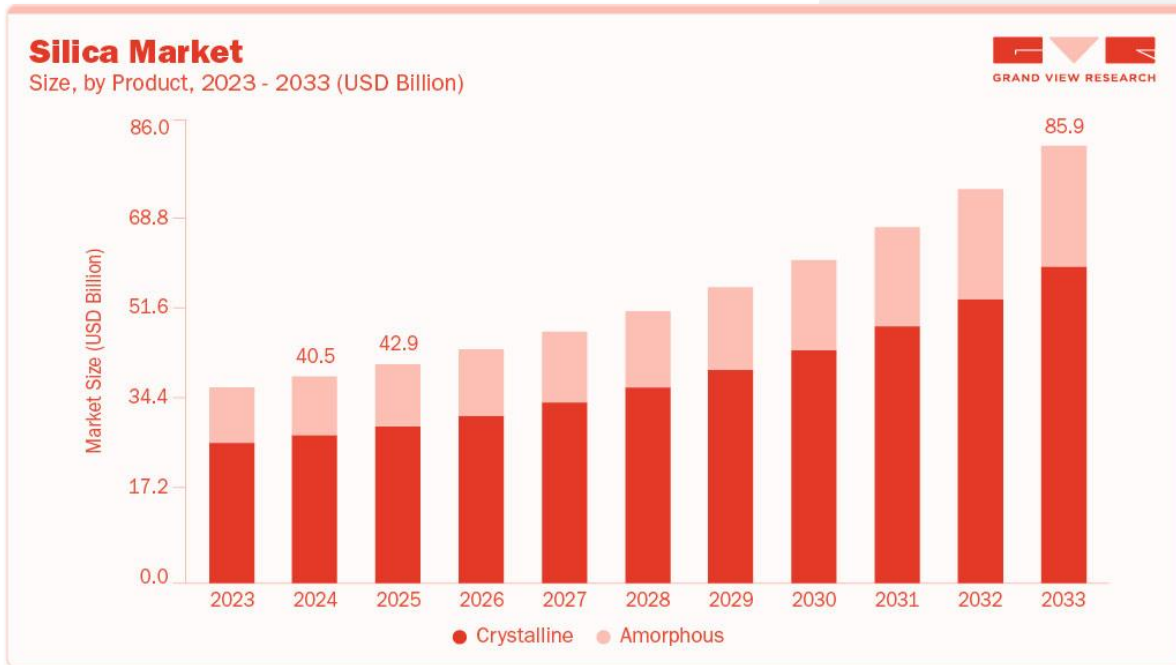
Silica Market



The global silica market size was estimated at USD \$**40.46 billion in 2024** and is projected to reach USD \$**85.86 billion by 2033**.¹

Silicon PV (Si PV) represents 97% of the current PV market and should remain the dominant technology until 2040, but raw material shortage could reduce the market.²

The global crystalline silicon PV cell market was valued at \$**35.5 billion in 2023**, and is projected to reach \$**52.8 billion by 2033**.³



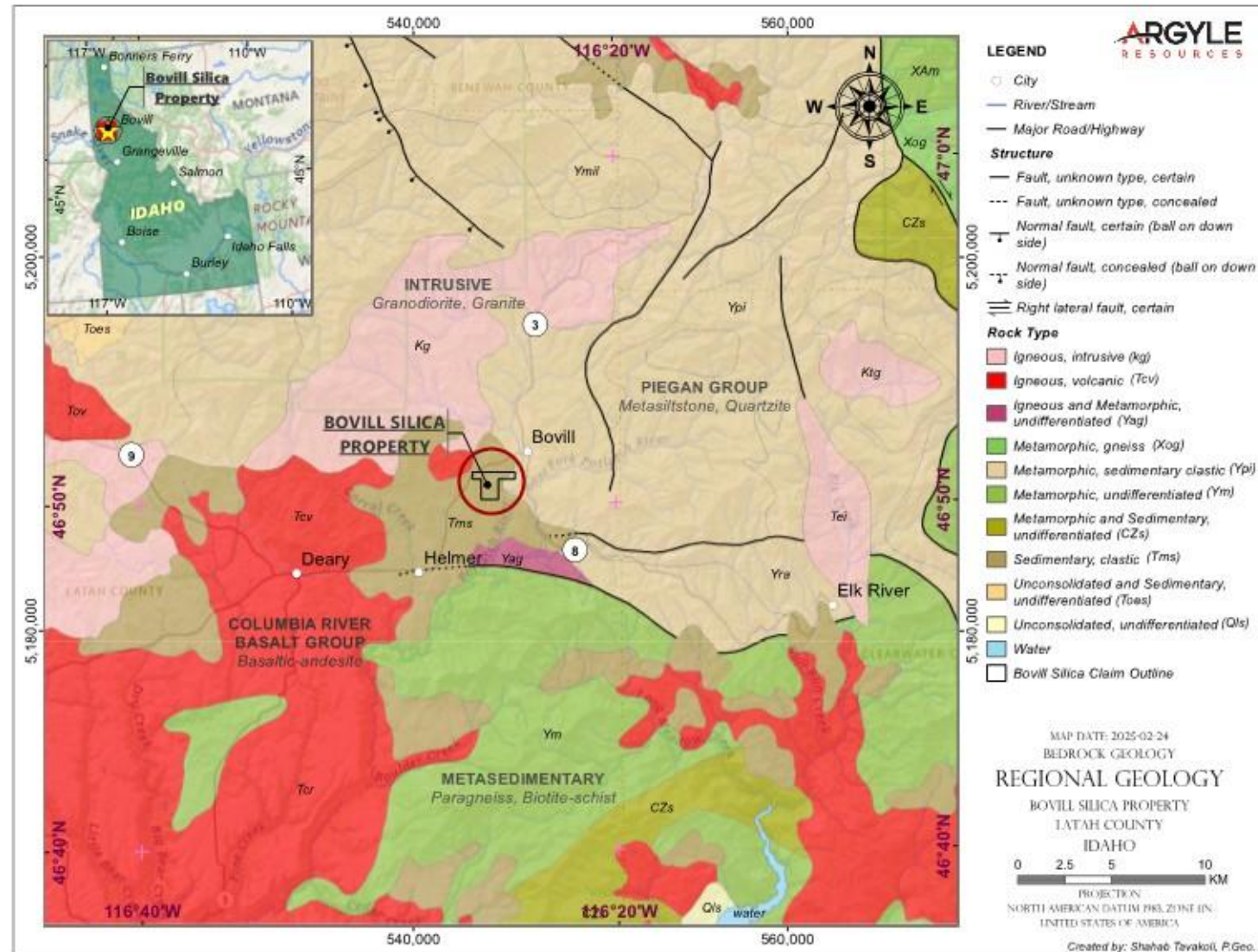
[1] <https://www.grandviewresearch.com/industry-analysis/silica-market>

[2] Masson and Kaizuka

[3] <https://www.alliedmarketresearch.com/crystalline-silicon-pv-cell-market-A186878>

Bovill Silica Project Idaho

- 22 mineral lode claims totalling 184 hectares
- 3km west of Bovill, Idaho
- Accessible via HWY 8 as well as forest service roads



Historical exploration results referenced here in were generated by previous owner and are presented for historical context only. Argyle's Qualified Person has reviewed the historical data on the basis of the original assessment report and assay certificates and considers the data reliable for indicating exploration potential, but cautions that historical results have not been independently verified to the standard of a current Mineral Resource estimate. Historical results are not necessarily indicative of future results.

Bovill Silica Project Idaho

Mining activity within the Bovill, Idaho region:

1. Bovill Kaolin Project¹

- Commodities: Kaolin, Halloysite, Quartz, K-feldspar
- Use: Used in ceramics, paints, plastics, and high-tech applications like nanotechnology.

2. Bovill Clay Deposit²

- Commodities: Kaolin, Halloysite
- Use: Primarily for ceramics and industrial applications.

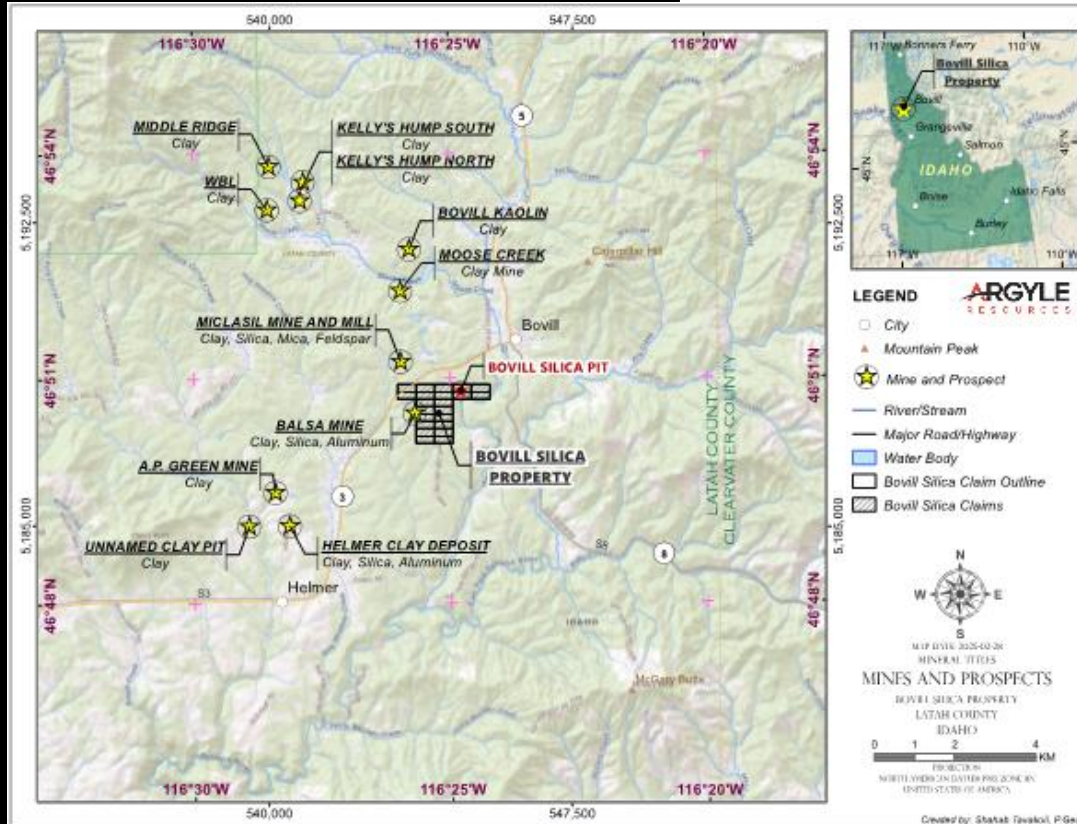
3. Ruby Creek Mine³

- Commodities: Gold
- Use: Gold extraction for commercial and industrial use.

4. Feather Creek Prospect⁴

- Commodities: Gold, possibly associated minerals
- Use: Gold mining, exploration potential for other minerals.

These mines and prospects primarily focus on kaolin-related clay deposits and gold, with kaolin and halloysite being notable for their industrial and technological applications.

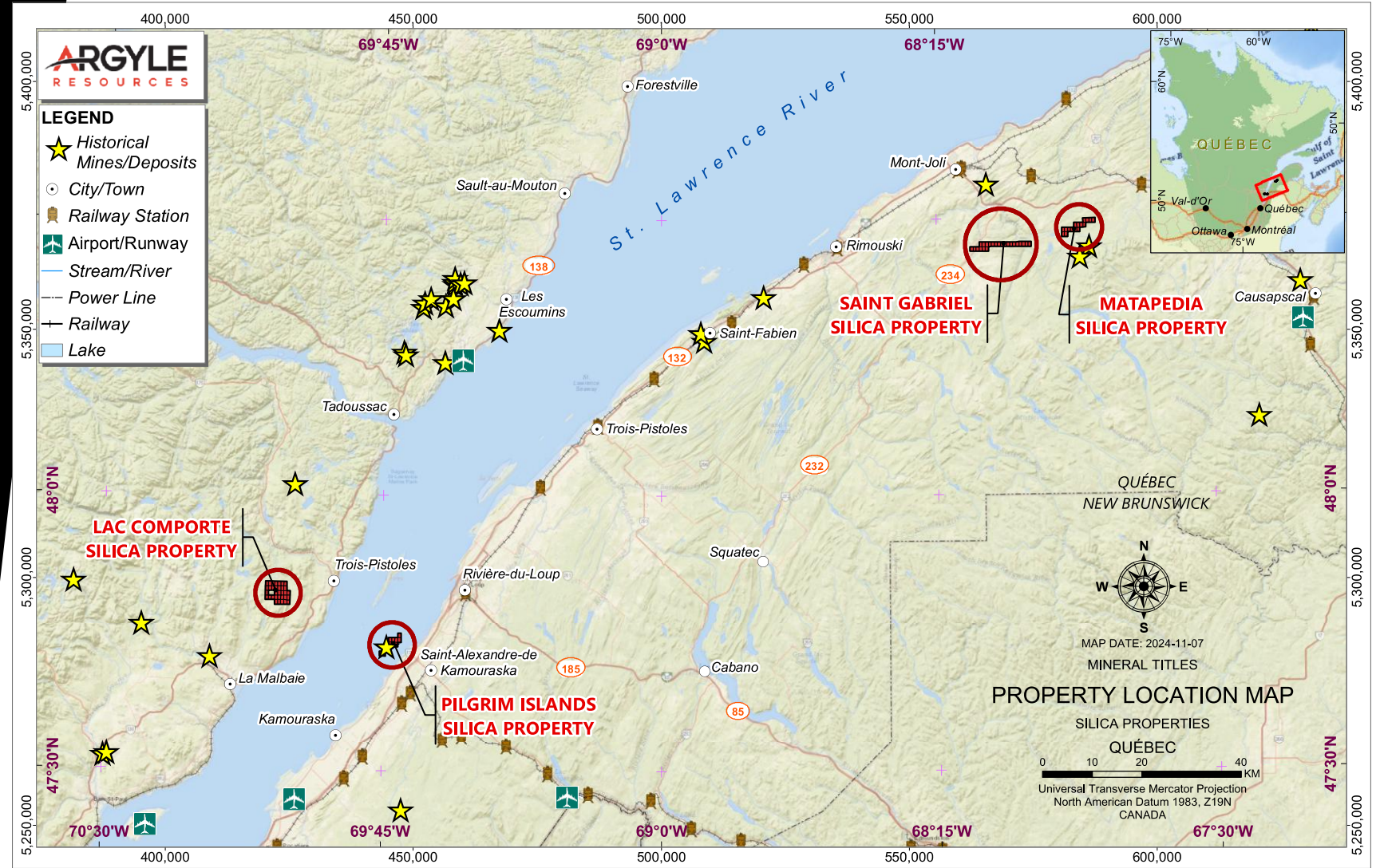


1. <https://www.mining-technology.com/projects/bovill-kaolin-project-idaho/>
2. <https://westernmininghistory.com/mine-detail/10119938/>
3. <https://westernmininghistory.com/mine-detail/10072079/>
4. <https://westernmininghistory.com/mine-detail/10096415/>

Quebec Projects

- Pilgrim Islands
- Matapedia
- Lac Comporté
- Saint Gabriel

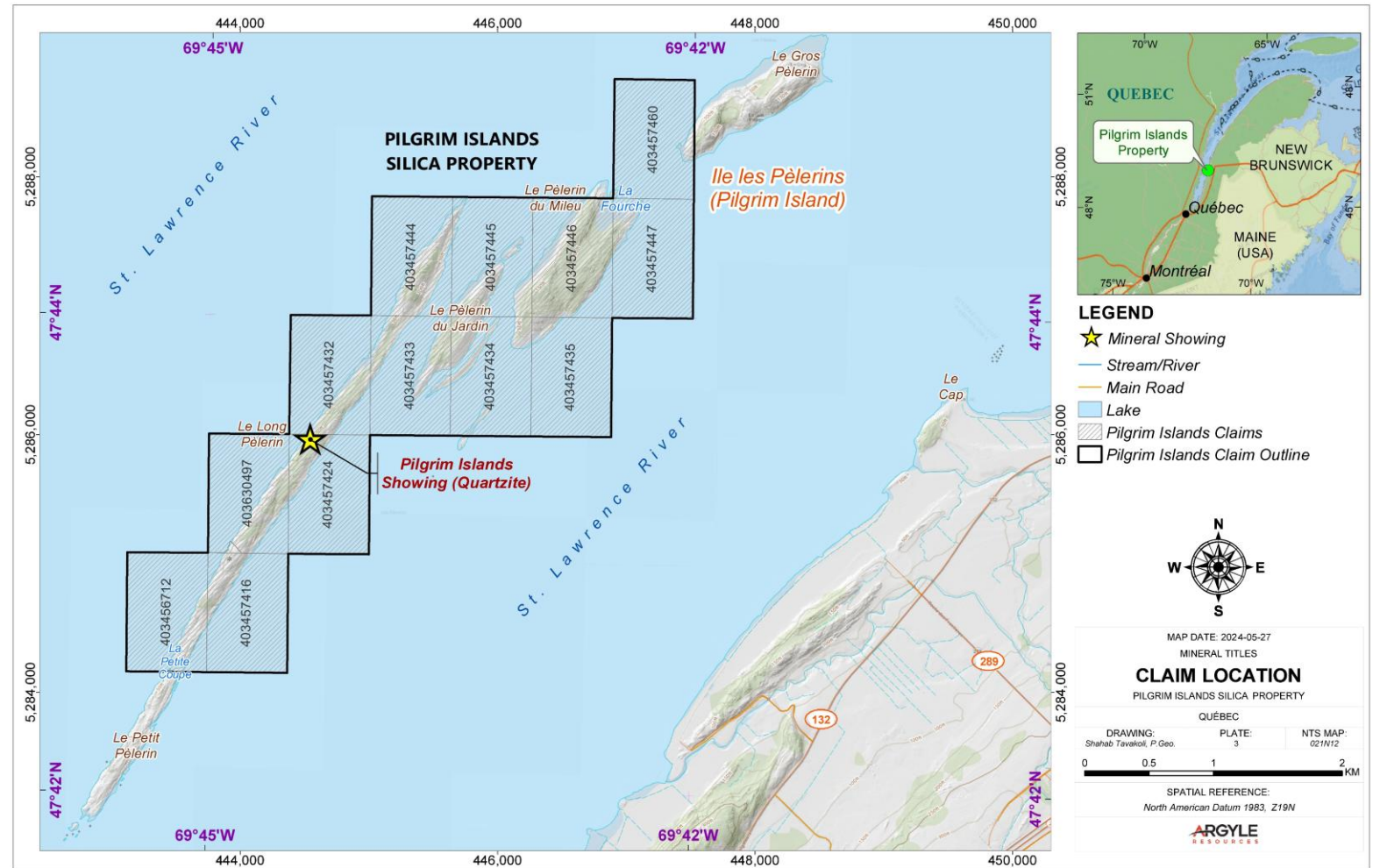
The presence of regional port infrastructure and railways are positive factors in expediting the transport of industrial minerals to the Great Lakes, the eastern USA, or overseas.



Pilgrim Islands Silica Project Quebec

Despite the absence of mining exploitation, the region is recognized by sedimentologists for its quartzites, which are particularly well exposed on the Pèlerins (Pilgrim) Islands bordering the coastline of the south shore of the St. Lawrence.

Source: GM18030 – Geologic Report, Pilgrim Islands Quartzite – K.W. Greig



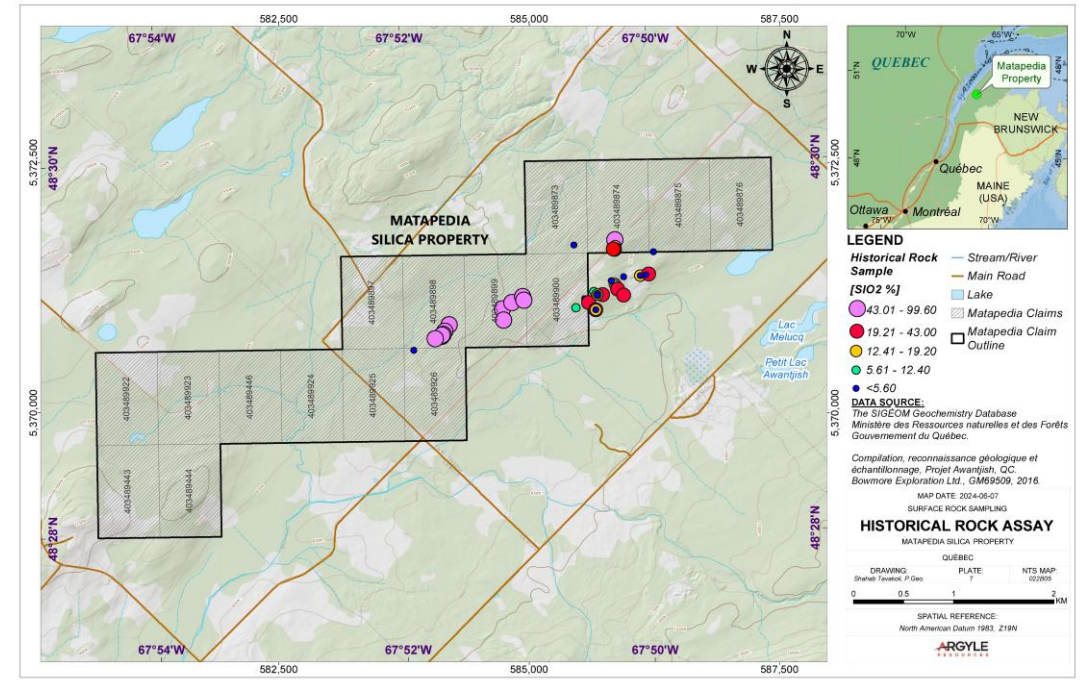
Historical exploration results referenced here in were generated by previous owner and are presented for historical context only. Argyle's Qualified Person has reviewed the historical data on the basis of the original assessment report and assay certificates and considers the data reliable for indicating exploration potential, but cautions that historical results have not been independently verified to the standard of a current Mineral Resource estimate. Historical results are not necessarily indicative of future results.

Matapedia Silica Project Quebec

Located 36 km from the coastal village of Grand-Métis, the property is included in a region of forest land. The silica showing sector also contains limestone which is exploited in the region by a small quarry.

The siliceous units of the Val-Brillant Formation rest above the Orignal Formation which is recognized in Lower St-Lawrence and Gaspesia for containing the most aluminous argillite in Quebec.¹ The presence of these three minerals (silica-limestone-aluminous claystones) in the St-Moise region could be highly strategic for certain industrial applications.

1. GM695509 Geologic report, Tiphane, M. (1975) DP323 and Quebec Ministry of Natural Resources.



Historical Rock Assay map Source: Compilation Geological Reconnaissance and Sampling – Project Awantjish, QC, Bowmore Exploration Ltd – GM 69509, 2016

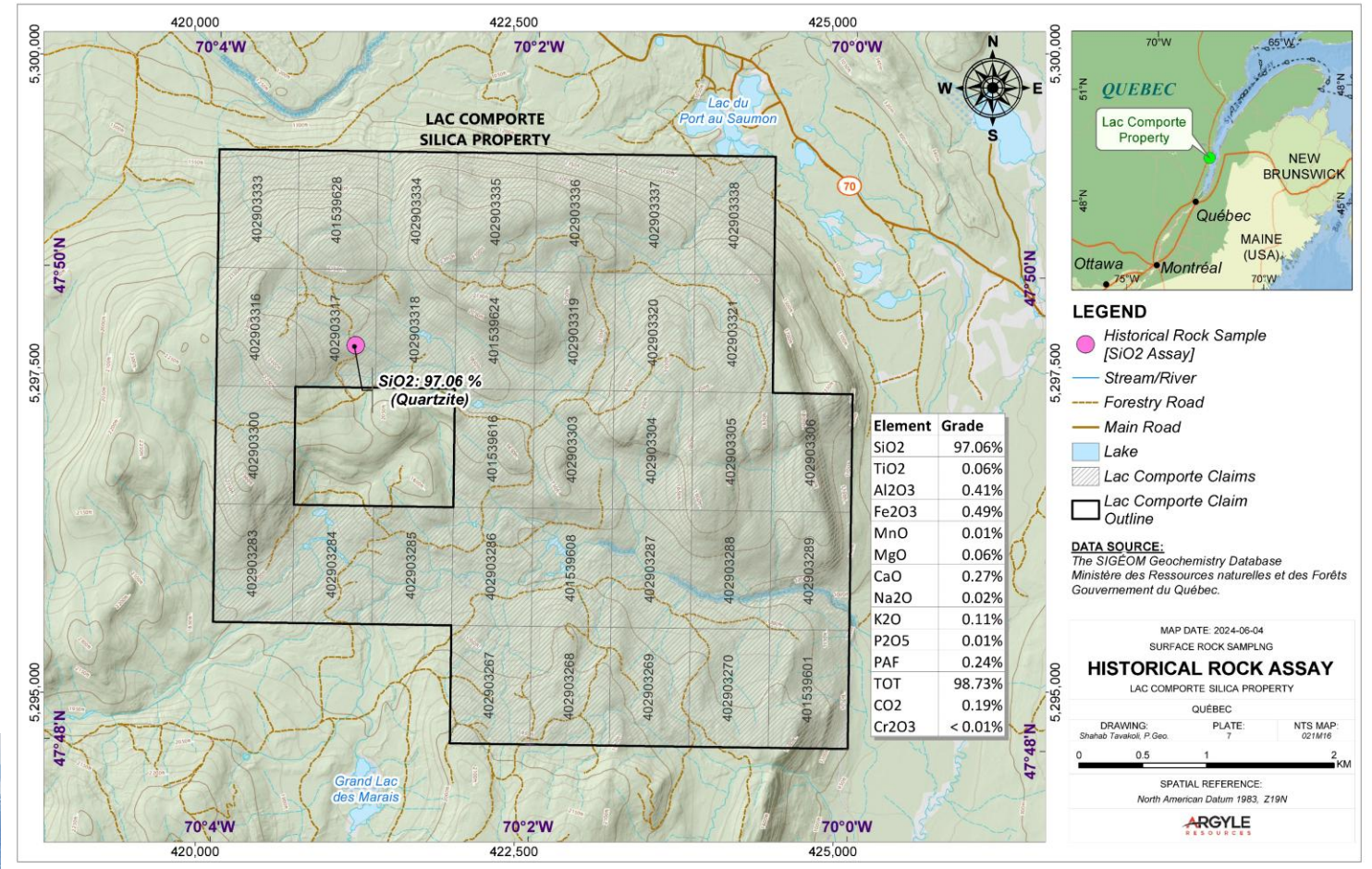
Historical exploration results referenced here in were generated by previous owner and are presented for historical context only. Argyle's Qualified Person has reviewed the historical data on the basis of the original assessment report and assay certificates and considers the data reliable for indicating exploration potential, but cautions that historical results have not been independently verified to the standard of a current Mineral Resource estimate. Historical results are not necessarily indicative of future results.



Lac Comporté Silica Project Quebec

The Lac Comporté project is located on the north shore of the St. Lawrence River in the La-Malbaie area. Access to the site is by provincial and forest roads from route 138 following a forest gravel road for 11 km.

Historical exploration results referenced here were generated by previous owner and are presented for historical context only. Argyle's Qualified Person has reviewed the historical data on the basis of the original assessment report and assay certificates and considers the data reliable for indicating exploration potential, but cautions that historical results have not been independently verified to the standard of a current Mineral Resource estimate. Historical results are not necessarily indicative of future results.

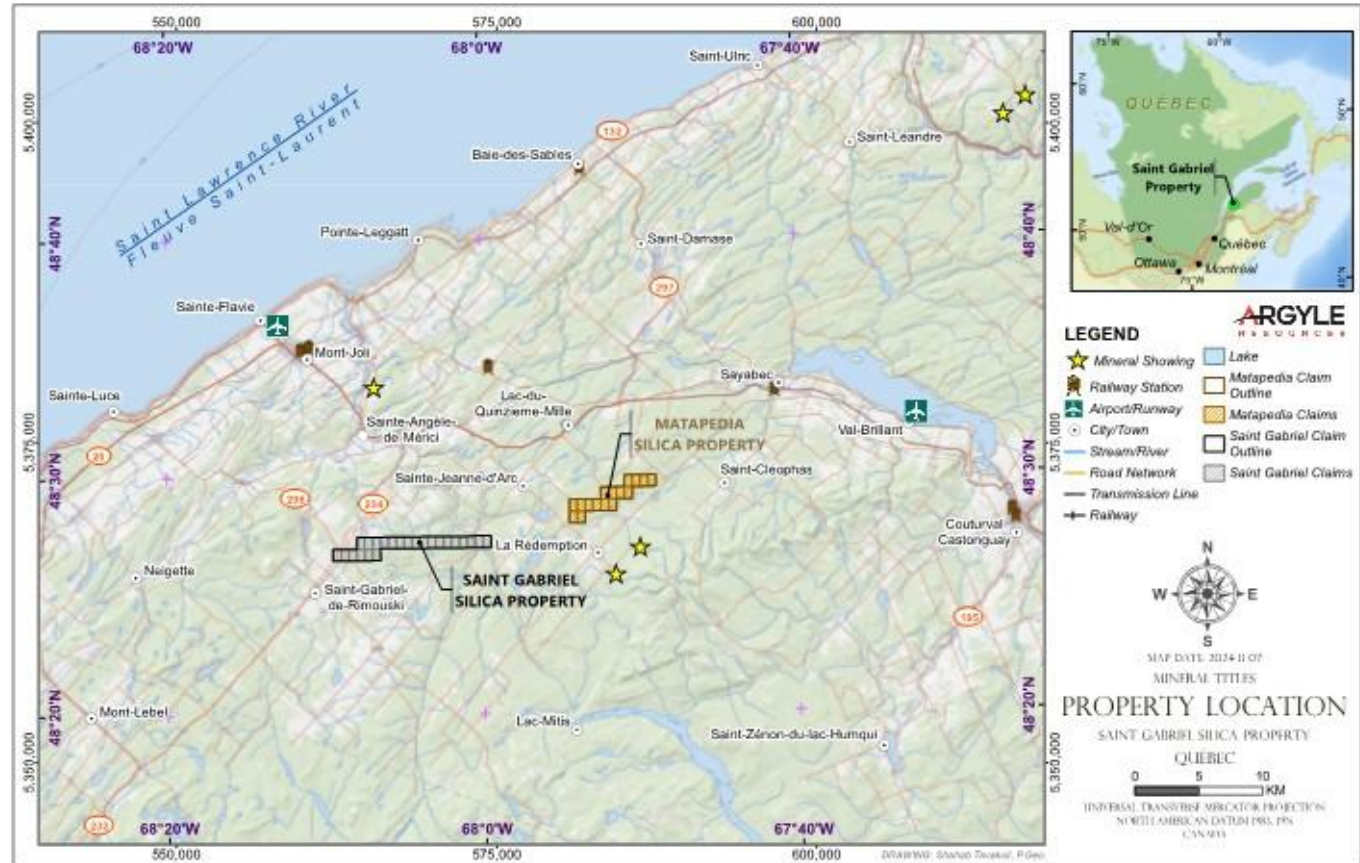


Historical Rock Assay map source (1): The SIGEOM Geochemistry Database - Ministry of Natural Resources and Forests - Government of Quebec

Historical Rock Assay map source (2): GM71500 - Visit to the Mont Grand-Fonds quartzite property - Argyle, 2018

Saint Gabriel Silica Project Quebec

The Saint Gabriel Silica Project consists of 23 contiguous mining claims totalling 1,312.90 ha. located in Bas-Saint-Laurent Region, Quebec. The Project is 364 km northeast of Quebec City with gravel road access off Highway QC 234.



Exploration History – Summary of Activities 1960-2023

- 1960s: Initial geological mapping by Quebec Ministry of Mines
- 1980s-1990s: Sampling and drilling programs
- 2023: Sampling by Noront Group; samples sent to ALS Laboratory in Mississauga

1991 Drill Program

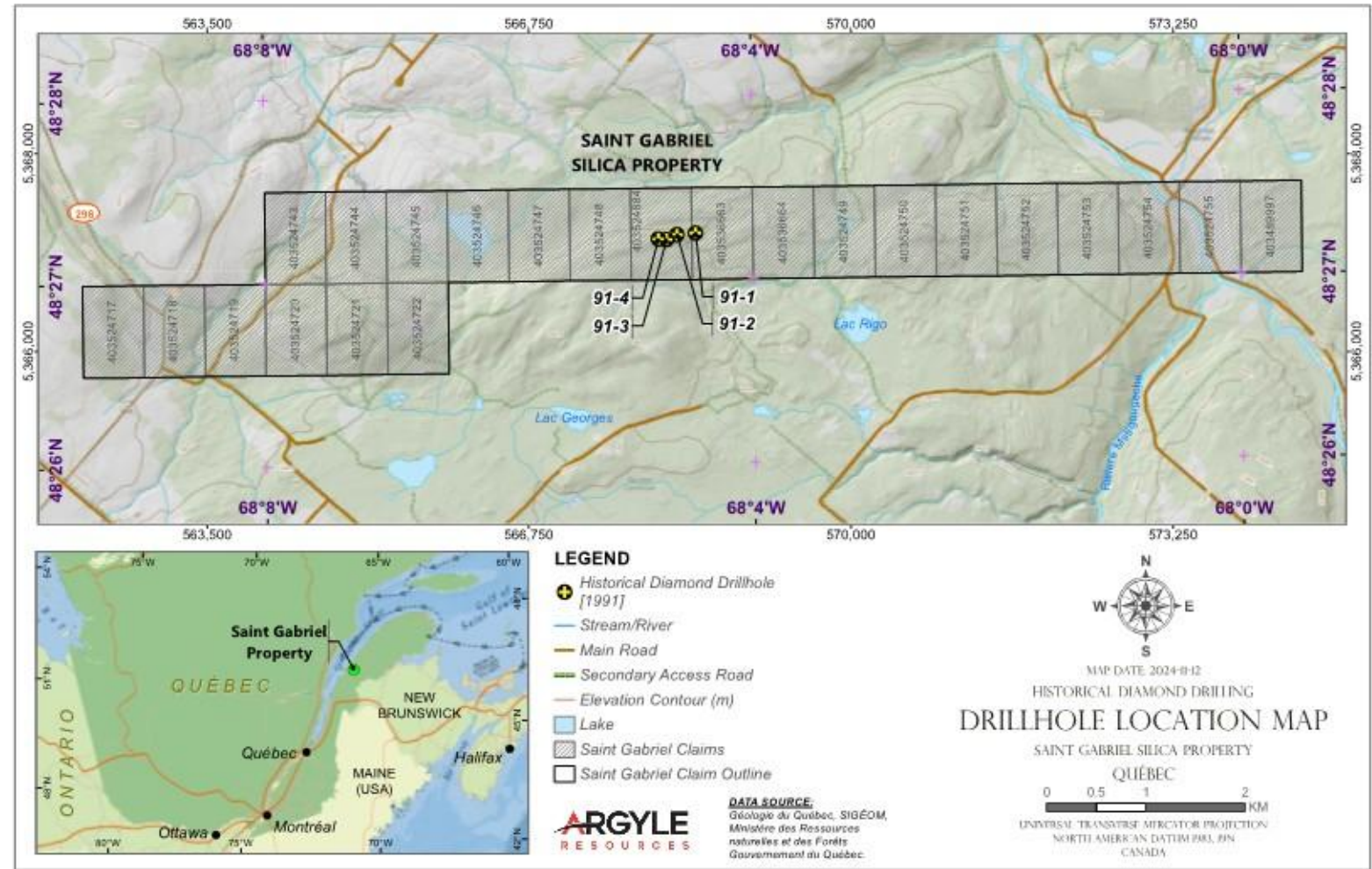
The map below depicts the location of prior drilling activities in respect of the Saint Gabriel project, carried out in 1991 by Andre Liboiron.

Historical exploration results referenced here in were generated by previous owner and are presented for historical context only. Argyle's Qualified Person has reviewed the historical data on the basis of the original assessment report and assay certificates and considers the data reliable for indicating exploration potential, but cautions that historical results have not been independently verified to the standard of a current Mineral Resource estimate. Historical results are not necessarily indicative of future results.

Saint Gabriel Silica Project Quebec

Commentary from Argyle CEO, Jeff Stevens :

"The Bas Saint Laurent region has a long history of promising geological exploration dating back to the 1960s, when the Quebec Ministry of Mines first mapped the area's quartzite formations. As we move into our planned Phase 1 exploration program at Saint Gabriel will focus on identifying potential high-purity silica zones to assess future development potential. This will include field-based XRF analysis to assess silica purity in real time, systematic sampling across the entire property with corresponding GPS coordinates and XRF data, laboratory verification of silica purity, and a 150kg bulk sampling program targeting two high-purity zones identified through chip sampling results."



Leadership

Jeff Stevens / CEO & Director

Mr. Stevens is a seasoned capital markets and deal structuring professional. He has taken multiple companies public via RTO's on various Canadian stock exchanges and has advised on numerous M&A opportunities. He has held both, senior officer and director roles with public companies in various industries. Mr. Stevens is currently CEO of Psyched Wellness Corp., a Canadian health supplements company dedicated to the production and distribution of artisanal, medicinal mushrooms and associated packaged consumer goods in the United States. In addition to Mr. Steven's experience as an operator, he also brings 20 + years of professional experience in the Canadian Capital Markets. Throughout his career, he was the head of two Sales and Trading desks and was instrumental in building the Canadian operations for a US-based Investment Bank in Toronto. Jeff's experience was largely focused on capital raising for micro-cap and small-cap companies in Canada. His client base included Institutional Money Managers, Hedge Funds, Mutual Funds, and Family Offices in Canada, the US and Europe.

Bob Krause / Director

Mr. Krause has over 30 years of industry experience as a geologist having worked extensively in North, Central and South America with an emphasis on geochemistry and exploration geology in, epithermal gold deposits, disseminated gold deposits, porphyry copper-gold deposits, and magmatic nickel-copper-PGE deposits. Mr. Krause is an exploration and project geologist having served as vice-president of exploration for numerous junior mining companies on three continents, also holding numerous directorships of public mining companies.

Leadership

Trevor Nawalkowski / Director

Mr. Nawalkowski is a business builder and entrepreneur, specializing in corporate business process and procedure for public or private companies. His roles have included corporate governance oversight, corporate secretary/legal review, business development and senior management in oil and gas, automation systems, digital communications and more. In addition, he has 15+ years of management experience in the Investor and Public relations procedure and process business.

Marianne Richer-Lafèche / Director

Ms. Richer-Lafèche is a lawyer at BCF LLP, Montréal office, where she specializes in mergers and acquisitions, investment funds, corporate governance and commercial contract drafting. Prior to joining BCF, Ms. Richer-Lafèche worked at another major Canadian law firm, where she was seconded on two occasions to clients in the financial services and consulting engineering sectors. Ms. Richer-Lafèche is a graduate of Université Laval and is currently completing a master's degree at the London School of Economics and Political Sciences. She has acted as director and corporate secretary for several organizations and is a member of the board of various private organizations and public companies.

George Yordanov, P.Geo., QP, MSc. / Director

Mr. Yordanov possesses over 15 years of management, technical, and exploration experience in the Canadian and international exploration industry. Mr. Yordanov is a Professional Geologist and an Independent Qualified Person, as defined by National Instrument 43-101. He holds an M.Sc. degree in Economic Geology with a specialization in Structural Geology and has extensive experience in grassroots exploration projects. His experience includes contributions to several major grassroots discoveries for Osisko Mining (market capitalization: \$1.23 billion), Sumitomo Metal (market capitalization: \$9.6 billion), Dundee Precious Metals (market capitalization: \$3.25 billion), and numerous other junior exploration companies. Mr. Yordanov has developed an advanced understanding of exploration for gold, base metals, lithium, and other raw materials including silica. Additionally, Mr. Yordanov served as Chief Geologist of Materials Testing, Engineering & Quality Assessment for Englobe Corp., where he oversaw industrial materials used in civil engineering and was responsible for the certification of a significant portion of the quarries in the province of Québec.

Capitalization

| | |
|----------------------|-------------------|
| Shares I/O | 11,368,060 |
| Warrants | 3,255,218 |
| Share Awards | 450,000 |
| Fully Diluted | 15,073,277 |



| | |
|--|-------------------------------------|
| Argyle Resources Corp. Floor 19 700 2 St SW Calgary, AB T2P 2Y9 Canada PH. +1 (647) 400-8494 | |
| Date of formation | 16 Mar 2023 |
| Exchange/Ticker | CSE: ARGL OTC: ARLYF FSE: ME0 |
| Jurisdiction where formed | British Columbia, Canada |
| Financial year end: | February 28 |
| NAICS 212299 | All other metal ore mining |
| CUSIP | 04031A |
| ISIN | CA04031A1021 |
| Transfer Agent | Endeavor Trust Corporation |
| Legal Counsel | Borden Ladner Gervais LLP |
| Auditors | Clearhouse LLP |

THANK YOU

ARGYLE

R E S O U R C E S

CSE: ARGL/OTC: ARLYF/FES: ME0

Critical Resources for Critical Demand

AI + ENERGY + DEFENSE

Argyle Resources Corp.

Floor 19, 700 2 St SW

Calgary, AB T2P 2Y9 Canada

PH. +1 (647) 400-8494

EM. info@argyleresourcescorp.com

argyleresourcescorp.com